



ichroma™ LH

INTENDED USE

ichroma™ LH is a fluorescence Immunoassay (FIA) for the quantitative determination of Luteinizing hormone (LH) in human serum/plasma. It is useful as an aid in management and monitoring of determination of evaluating fertility issues, function of reproductive organs (ovaries or testicles), or detection of the ovulation.

For *in vitro* diagnostic use only.

INTRODUCTION

Human luteinizing hormone (LH, lutropin) is a glycoprotein hormone with two dissimilar subunits (α and β). LH has a molecular weight of approximately 29,000 daltons.¹ The α -subunit of LH contains 92 amino acid residues and is essentially identical to the β -subunits of follicle stimulating hormone (FSH, follitropin), thyroid stimulating hormone (TSH, thyrotropin), and human chorionic gonadotropin (hCG).¹⁻⁴ The β -subunit of LH contains 112 amino acid residues and is considerably different from that of FSH and TSH.^{1,4,5} However, the β -subunits of LH and hCG are very similar. The structural similarities between LH and hCG are responsible for the observed similarity in biological properties.^{5,6} In the female, hLH stimulates the final maturation of the follicle, follicular rupture, and ovulation.⁷ Human LH is secreted by the gonadotropic cells of the anterior lobe of the pituitary gland in response to gonadotropin releasing hormone (GnRH) from the medial basal hypothalamus. Both hLH and hFSH are secreted in a pulsatile nature; however, this is less noticeable for hFSH perhaps due to the longer half-life in the circulation.⁷ In a normal menstrual cycle negative feedback by estradiol suppresses hLH secretion in the follicular phase. As the follicle develops (in response to hFSH) estradiol production increases which triggers an increase in GnRH and an increased sensitivity of the pituitary to GnRH. A GnRH surge results in the preovulatory (mid-cycle) surge of hLH and ovulation. Following this surge, hLH is suppressed during the luteal phase due to negative feedback from progesterone and estradiol.^{7,9} Variation in cycle lengths are observed in normally menstruating females due to variations in the length of the follicular phase. In the menopausal female, hLH levels are elevated in response to decreased production of ovarian estrogens and progestogens, which eliminates the negative feedback mechanism on the pituitary gland. As a result, ovulation and menstrual cycles decrease and eventually cease.¹⁰ In the male, hLH is often referred to as interstitial cell-stimulating hormone and influences the production of testosterone by the Leydig cells of the testes.¹¹ At menopause, or following ovariectomy in women, concentrations of estrogens decline to low levels. The lowered concentrations of estrogens result in a loss of the negative feedback on gonadotropin release. The consequence is an increase in the concentrations of LH and FSH.^{12,13,14} Concentrations of hLH and hFSH are commonly determined in investigations of menstrual cycle, fertility, and pubertal developmental abnormalities, such as premature ovarian failure, menopause, ovulatory disorders and pituitary failure.¹⁵ The ratio of hLH/hFSH has been used to assist in the diagnosis of polycystic ovary disease. Low concentrations of hLH and hFSH may indicate pituitary failure while elevated concentrations of hLH and hFSH along with decreased concentrations of gonadal steroids may indicate gonadal failure (menopause, ovariectomy, premature ovarian syndrome, Turners Syndrome).¹⁶ Low concentrations of gonadotropin are usually observed in females taking oral steroid based contraceptives.¹⁷ In the male, elevated hLH and hFSH with low concentrations of gonadal steroids may indicate testicular failure or anorchia. In Klinefelter's syndrome hLH may be elevated due to Sertoli

양식-GE02-15 (Rev. 03)

cell failure.¹⁸

PRINCIPLE

The test uses a sandwich immunodetection method; the detector antibody in buffer binds to antigen in sample, forming antigen-antibody complexes, and migrates onto nitrocellulose matrix to be captured by the other immobilized-antibody on test strip.

The more antigen in sample forms the more antigen-antibody complex and leads to stronger intensity of fluorescence signal on detector antibody, which is processed by instrument for ichroma™ tests to show LH concentration in sample.

COMPONENTS

ichroma™ LH consists of 'Test cartridges', 'Detection Buffer Tubes' and an 'ID chip'.

- The test cartridge contains a test strip, the membrane which has anti human LH at the test line, while rabbit IgG at the control line.
- Each test cartridge is individually sealed in an aluminum foil pouch containing a desiccant. 25 sealed test cartridges are packed in a box which also contains an ID chip.
- The detection buffer contains anti human LH-fluorescence conjugate, anti rabbit IgG-fluorescence conjugate, bovine serum albumin (BSA) as a stabilizer and sodium azide as a preservative in CAPSO buffer.
- The detection buffer is pre-dispensed in a tube. 25 detection buffer tubes are packaged in a Box and further packed in a Styrofoam box with ice-pack for the shipment.

WARNINGS AND PRECAUTIONS

- For *in vitro* diagnostic use only.
- Carefully follow the instructions and procedures described in this 'Instruction for use'.
- Use only fresh samples and avoid direct sunlight.
- Lot numbers of all the test components (test cartridge, ID chip and detection buffer) must match each other.
- Do not interchange the test components between different lots or use the test components after the expiration date, either of which might yield misleading of test result(s).
- Do not reuse. A detection buffer tube should be used for processing one sample only. So should a test cartridge.
- The test cartridge should remain sealed in its original pouch before use. Do not use the test cartridge, if it is damaged or already opened.
- Frozen sample should be thawed only once. For shipping, samples must be packed in accordance with the regulations. Sample with severe hemolytic and hyperlipidemia cannot be used and should be recollected.
- Just before use, allow the test cartridge, detection buffer and sample to be at room temperature for approximately 30 minutes.
- **ichroma™ LH** as well as the instrument for ichroma™ tests should be used away from vibration and/or magnetic field. During normal usage, it can be noted that instrument for ichroma™ tests may produce minor vibration.
- Used detection buffer tubes, pipette tips and test cartridges should be handled carefully and discarded by an appropriate method in accordance with relevant local regulations.
- An exposure to larger quantities of sodium azide may cause certain health issues like convulsions, low blood pressure and heart rate, loss of consciousness, lung injury and respiratory failure.
- **ichroma™ LH** will provide accurate and reliable results subject to the following conditions.
 - Use **ichroma™ LH** should be used only in conjunction with instrument for ichroma™ tests.
 - Any anticoagulants other than EDTA, heparin sodium should be avoided.

STORAGE AND STABILITY

- The test cartridge is stable for 20 months (while sealed in an aluminum foil pouch) if stored at 4 - 30°C.
- The detection buffer pre-dispensed in a tube is stable for 20 months if stored at 2 - 8°C.
- After the test cartridge pouch is opened, the test should be performed immediately.

LIMITATION OF THE TEST SYSTEM

- The test may yield false positive result(s) due to the cross-reactions and/or non-specific adhesion of certain sample components to the capture/detector antibodies.
- The test may yield false negative result. The non-responsiveness of the antigen to the antibodies is most common where the epitope is masked by some unknown components, so as not to be detected or captured by the antibodies. The instability or degradation of the antigen with time and/or temperature may cause the false negative as it makes antigen unrecognizable by the antibodies.
- Other factors may interfere with the test and cause erroneous results, such as technical/procedural errors, degradation of the test components/reagents or presence of interfering substances in the test samples.
- Any clinical diagnosis based on the test result must be supported by a comprehensive judgment of the concerned physician including clinical symptoms and other relevant test results.

MATERIALS SUPPLIED

REF 13010

Components of **ichroma™ LH**

- Test Cartridge Box:
 - Test Cartridges 25
 - ID Chip 1
 - Instruction For Use 1
- Box containing Detection Buffer Tubes
 - Detection Buffer tubes 25

MATERIALS REQUIRED BUT SUPPLIED ON DEMAND

Following items can be purchased separately from **ichroma™ LH**.

Please contact our sales division for more information.

- Instrument for **ichroma™** tests
 - **ichroma™ Reader** REF FR203
 - **ichroma™ D** REF 13303
- **ichroma™ Printer** REF FPRR007
- **ichroma™ Universal Control I** REF CFPO-25

SAMPLE COLLECTION AND PROCESSING

The sample type for **ichroma™ LH** is human serum / plasma.

- It is recommended to test the sample within 24 hours after collection.
- The serum or plasma should be separated from the clot by centrifugation within 3 hours after the collection of whole blood.
- Samples may be stored for up to a week at 2-8°C prior to being tested. If testing will be delayed more than a week, samples should be frozen at -20°C.
- Samples stored frozen at -20°C for 2 months showed no performance difference.
- Once the sample was frozen, it should be used one time only for test, because repeated freezing and thawing can result in the change of test values.

TEST SETUP

- Check the contents of **ichroma™ LH**: Sealed Test Cartridge, Detection Buffer Tubes and ID Chip.
- Ensure that the lot number of the test cartridge matches that of the ID chip as well as the detection buffer.
- Keep the sealed test cartridge (if stored in refrigerator) and the detection buffer tube at room temperature for at least 30 minutes just prior to the test. Place the test cartridge on a clean, dust-free and flat surface.
- Turn on the instrument for **ichroma™** tests.
- Insert the ID Chip into the ID chip port of the instrument for **ichroma™** tests.
- Press the 'Select' button on the instrument for **ichroma™** tests. (Please refer to the 'Instrument for **ichroma™** tests Operation Manual' for complete information and operating instructions.)

TEST PROCEDURE

- 1) Transfer 150 µL (Human serum / plasma / control) of sample using a transfer pipette to a tube containing the detection buffer.
- 2) Close the lid of the detection buffer tube and mix the sample thoroughly by shaking it about 10 times. (The sample mixture must be used immediately.)
- 3) Pipette out 75 µL of a sample mixture and load it into the sample well on the test cartridge.
- 4) Leave the sample-loaded test cartridge at room temperature for 15 minutes.
- 5) To scan the sample-loaded cartridge, insert it into the cartridge holder of the instrument for **ichroma™** tests. Ensure proper orientation of the cartridge before pushing it all the way inside the cartridge holder. An arrow has been marked on the cartridge especially for this purpose.
- 6) Press 'Select' button on the instrument for **ichroma™** tests to start the scanning process.
- 7) Instrument for **ichroma™** tests will start scanning the sample-loaded cartridge immediately.
- 8) Read the test result on the display screen of the instrument for **ichroma™** tests.

INTERPRETATION OF TEST RESULT

- Instrument for **ichroma™** tests calculates the test result automatically and displays LH concentration of the test sample in terms of mIU/mL.
- The cut-off (reference range)

	Type	mIU/mL
Females	Males	1.0 – 8.0
	Follicular phase	1.0 – 12.0
	Ovulatory phase	17.0 – 77.0
	Luteal phase	0.0 – 15.0
	Postmenopausal	11.0 – 40.0
Working range : 1.0~100.0 mIU/mL		

QUALITY CONTROL

- Quality control tests are a part of the good testing practice to confirm the expected results and validity of the assay and should be performed at regular intervals.
- The control tests should be performed immediately after opening a new test lot to ensure the test performance is not altered.
- Quality control tests should also be performed whenever there is any question concerning the validity of the test results.
- Control materials are not provided with **ichroma™ LH**. For more information regarding obtaining the control materials, contact [Boditech Med Inc.'s Sales Division for assistance](#). (Please refer to the instruction for use of control material.)

PERFORMANCE CHARACTERISTICS

- Cross-reactivity:** There, in test samples, are biomolecules such as below the table were added to the test sample(s) at concentrations much higher than their normal physiological levels in blood. **ichroma™ LH** test results did not show any significant cross-reactivity with these biomolecules.

Cross reactivity materials	Concentration of cross reactivity materials	Cross reactivity (%)
hCG	200,000 mIU/ml	0.5
FSH	1,000mIU/ml	N/D
PRL	1,000ng/ml	N/D
TSH	1,000uIU/ml	0.7

* ND : Not Detected

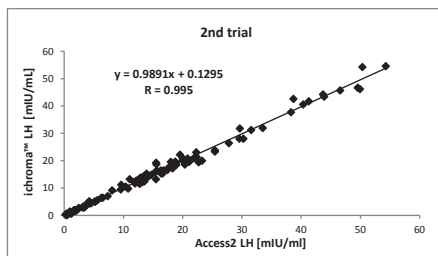
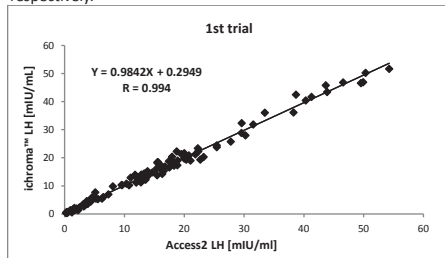
- Interference:** Study of interference from table below with **ichroma™ LH** showed following results.

Interference materials	Concentration of interference materials	Interference (%)
D-glucose	600 mM/L	<1.5
L-Ascorbic acid	2 mM/L	<1.7
Bilirubin [unconjugated]	4 mM/L	<4.3
Hemoglobin[human]	20 g/L	<4.9
Cholesterol	130 mM/L	<1.5
Triglyceride	100 mg/mL	<6.9

- Precision:** The intra-assay precision was calculated by one evaluator, who tested different concentration of control standard ten times each with three different lots of **ichroma™ LH**. The inter-assay precision was confirmed by 2 different evaluators with 3 different lots, testing three times each different concentrations.

<Intra-assay>						
LH [mIU/mL]	Lot 1	Lot 2	Lot 3	AVG	SD	CV(%)
3.0	2.86	2.73	2.69	2.76	0.19	7.0
5.8	5.71	5.40	5.28	5.47	0.40	7.3
15.3	15.41	15.15	15.03	15.20	0.36	2.4
30.6	30.07	28.56	27.89	28.84	1.36	4.7
<Inter-assay>						
LH [mIU/ml]	Lot 1	Lot 2	Lot 3	AVG	SD	CV(%)
3.0	2.76	2.68	2.65	2.70	0.22	8.3
5.8	6.10	5.78	5.63	5.84	0.49	8.5
15.3	15.66	14.99	14.36	15.00	1.16	7.7
30.6	30.12	29.16	28.53	29.72	1.29	4.4

- Comparability:** LH concentrations of 117 serum samples were quantified independently with **ichroma™ LH** and Access2 (Beckman Coulter Inc. USA) as per prescribed test procedures. Test results were compared and their comparability was investigated with linear regression and coefficient of correlation (R). Linear regression and coefficient of correlation between the two tests were $Y = 0.9842X + 0.2949$ (1st trial), $Y = 0.9891X + 0.1295$ (2nd trial) and $R = 0.994$ (1st trial), 0.995 (2nd trial) respectively.









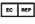




REFERENCES

- Pierce JG, Parsons TF. Glycoprotein Hormones: Structure and Function. *Annu Rev Biochem* 1981; 50:465-95.
- Shome B, Parlow AF. Human Follicle Stimulating Hormone (hFSH): First Proposal for the Amino Acid Sequence of the α -Subunit and First Demonstration of its Identity with the α -Subunit of Human Luteinizing Hormone (hLH). *J Clin Endocrinol Metab* 1974; 39:199-202.
- Sairam MR, Li CH. Human Pituitary Thyrotropin: Isolation and Chemical Characterization of its Subunits. *Biochem Biophys Res Commun* 1973; 51:336-42.
- Vaitukaitis JL, Ross GT, Braunstein GD, et al. Gonadotropins and Their Subunits: Basic and Clinical Studies. *Recent Prog Horm Res* 1976; 32:289-331.
- Bishop WH, Nureddin A, Ryan RJ. Pituitary Luteinizing and Follicle-Stimulating Hormones. In: Parsons JA, editor. Peptide Hormones. Baltimore: University Park Press, 1976:273-98.
- Keutmann HT, Williams RM, Ryan RJ. Structure of Human Luteinizing Hormone Beta Subunit: Evidence for a Related Carboxyl-Terminal Sequence Among Certain Peptide Hormones. *Biochem Biophys Res Commun* 1979; 90:842-8.
- South SA, Yankov VI, Evans WS. Normal reproductive neuroendocrinology in the female. In *Endocrinology and Metabolism Clinics of North America* 1993; Edited by Veldhuis JD, Philadelphia, PA: W. B. Saunders Co. 22: 1-28.
- Adashi EY. The ovarian life cycle. In *Reproductive Endocrinology*. Edited by Yen, S.S.C., Jaffe, R.B., Philadelphia, W. B. Saunders Co. 1991; 181-237.
- Yen SSC. The human menstrual cycle: neuroendocrine regulation. In *Reproductive Endocrinology* 1991; Edited by Yen, S.S.C., Jaffe, RB, Philadelphia, PA: W. B. Saunders Co., 273-308.
- Richardson SJ. The biological basis of menopause. Baillières Clinical Endocrinology and Metabolism 1993; 7:1-16.
- Reyes-Fuentes A, Veldhuis JD. Neuroendocrine physiology of the normal male gonadal axis. In *Endocrinology and Metabolism Clinics of North America* 1993; Edited by Veldhuis, JD. Philadelphia, PA: W. B. Saunders Co., 22: 93-124.
- Ross GT. Disorders of the Ovary and Female Reproductive Tract. In: Wilson JD and Foster DW, editors. *Williams Textbook of Endocrinology*. Philadelphia: Saunders, 1985:206-58.
- Beastall GH, et al. Assays for Follicle Stimulating Hormone and Luteinizing Hormone: Guidelines for the Provision of a Clinical Biochemistry Service. *Ann Clin Biochem* 1987; 24:246-62.
- Judd HL. Hormonal Dynamics Associated with the Menopause. *Clin Obstet Gynecol* 1976; 19:775-88.
- Carr BR, Disorders of the ovary and female reproductive tract. In *Williams Textbook of Endocrinology* 8th edition 1992; Edited by Wilson JD and Foster DW, Philadelphia, PA: W. B. Saunders Co., 733-798.
- Hall JE. Polycystic ovarian disease as a neuroendocrine disorder of the female reproductive axis. In *Endocrinology and Metabolism Clinics of North America* 1993; Edited by Veldhuis JD, Philadelphia, PA: W. B. Saunders Co. 22 (1): 75-92.
- Bonnar J. The hypothalamus and reproductive function. In *The*

Medical Annual 1973; Edited by Scott RB and Walker RM, Bristol, England, J. Wright and Sons, 251-258.

18. Tietz Textbook of Clinical Chemistry. 1994. Second edition. Edited by Burtis CA and Ashwood ER, Philadelphia, PA: W. B. Saunders Co. 1846-1850.
19. National Institutes of Health. Historical reference range of Luteinizing Hormone.
<http://ccinprod.cc.nih.gov/dlm/testguide.nsf/Index/A166B3FACB4F69C285256BA4006B37ED?OpenDocument>

Note: Please refer to the table below to identify various symbols

	Read instructions for use
	Use by
	Batch code
	Catalog number
	Caution
	Manufacturer
	Authorized representative of the European Community
	In vitro diagnostic medical device
	Temperature limit
	Do not reuse
	This product fulfills the requirements of the Directive 98/79/EC on in vitro diagnostic medical devices

For technical assistance; please contact:

Boditech Med Inc.'s Technical Services

Tel: +82 33 243-1400

E-mail: sales@boditech.co.kr



Boditech Med Incorporated

43, Geodudanji 1-gil, Dongnae-myeon,

Chuncheon-si, Gang-won-do 200-883

Republic of Korea

Tel: +(82) -33-243-1400

Fax: +(82) -33-243-9373

www.boditech.co.kr



Obelis s.a

Bd. Général Wahis 53,

1030 Brussels, BELGIUM

Tel: +(32) -2-732-59-54

Fax: +(32) -2-732-60-03

E-Mail: mail@obelis.net

