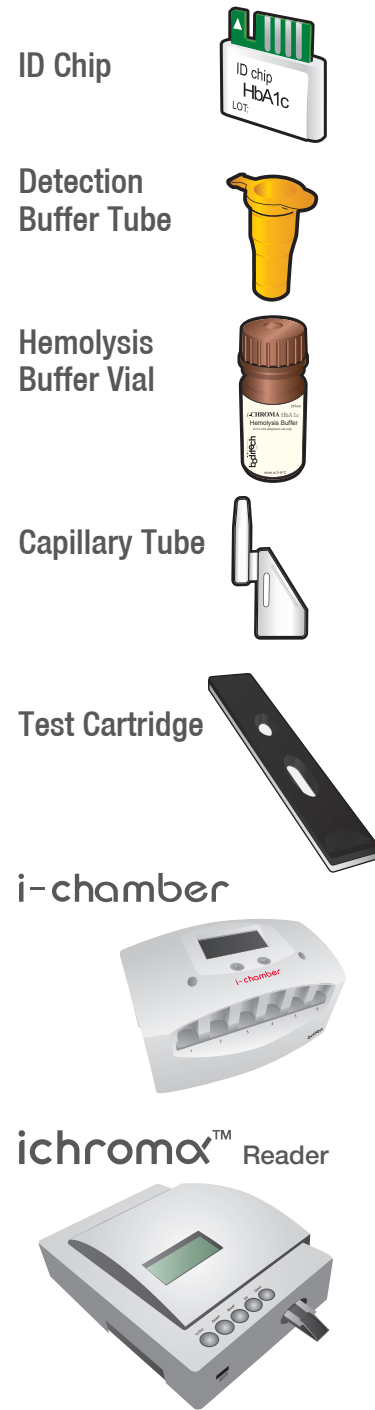


ichroma™ HbA1c

Test Setup

Test Components



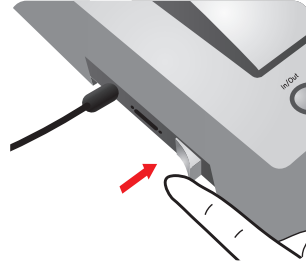
i-chamber Target temp. 30°C

Important

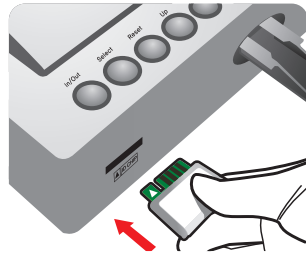
Allow 'Detection Buffer Tube' to attain room temperature at least for 30 minutes before performing the test

Make sure that lot number of the 'ID Chip' is exactly same as the lot number of 'Test Cartridge' and 'Detection Buffer Tube'

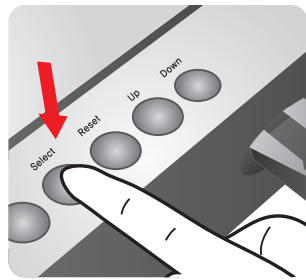
1 Turn the power switch 'On'



2 Insert ID Chip



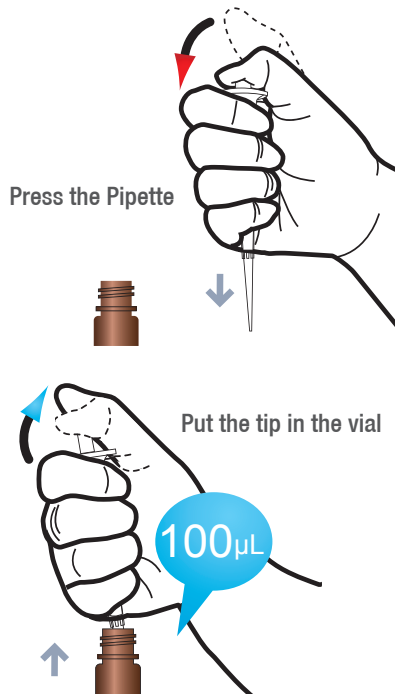
3 Press 'Select' Button



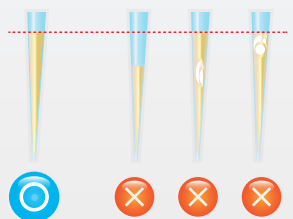
4 Insert a cartridge into an i-chamber slot



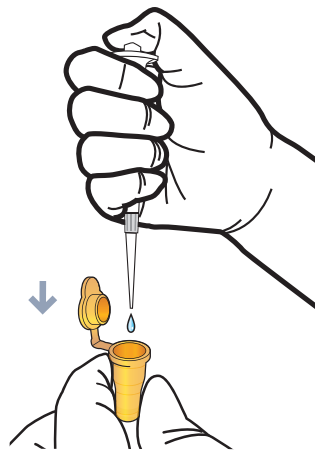
1 Draw 100 µL of Hemolysis Buffer



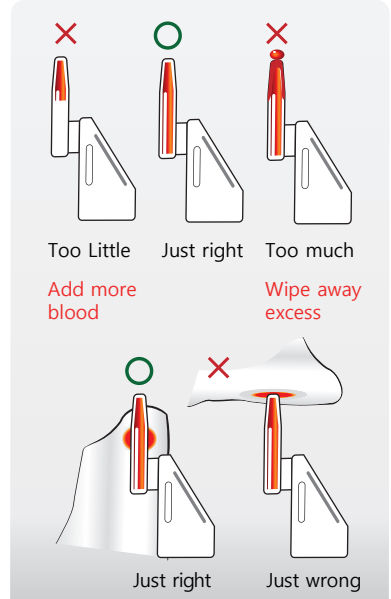
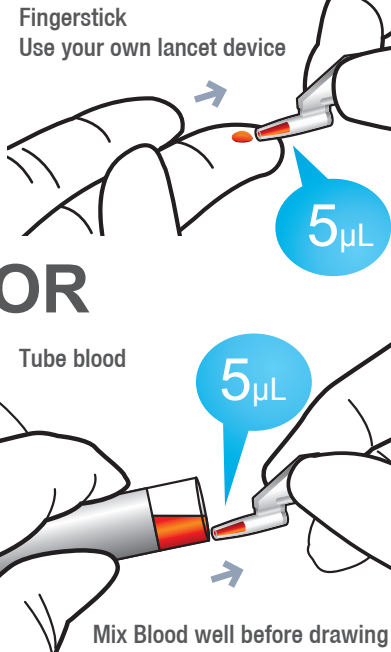
Watch for bubbles in the tip



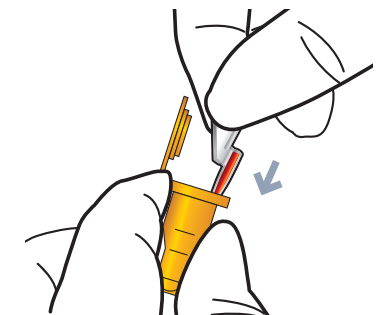
2 Add it into Detection buffer Tube



3 Draw whole blood

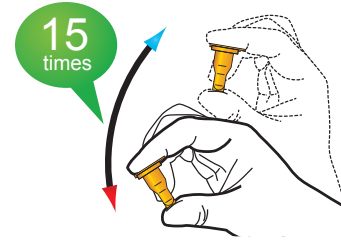


4 Put the capillary tube into the Detection buffer tube



Test Procedure

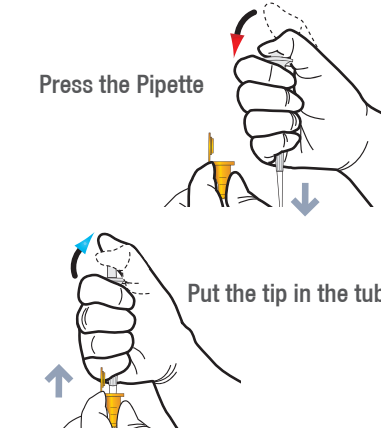
5 Shake the Detection buffer tube



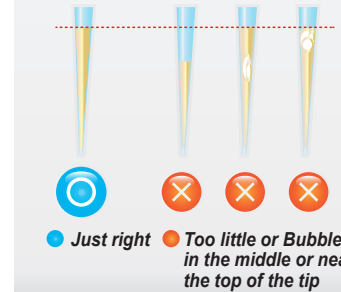
6 Take the cartridge half way out



7 Draw 75 µL of the sample mixture

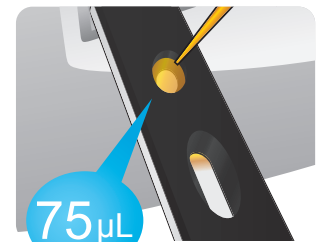


Watch for bubbles in the tip



8 Sample loading

Apply 75ul in the Sample Well



Wait till the sample flow appears in the windows (~10 seconds)

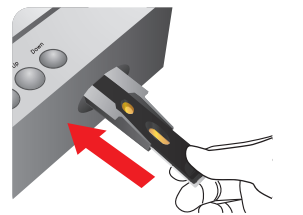
9 Insert the cartridge into i-chamber



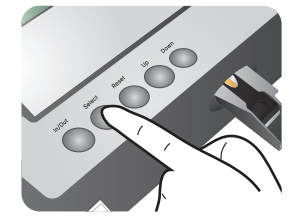
10 Leave the cartridge in i-chamber for 12 minutes before removing



11 Insert the cartridge into ichroma™ Reader



12 Press 'Select' Button



13 Read the test result

